

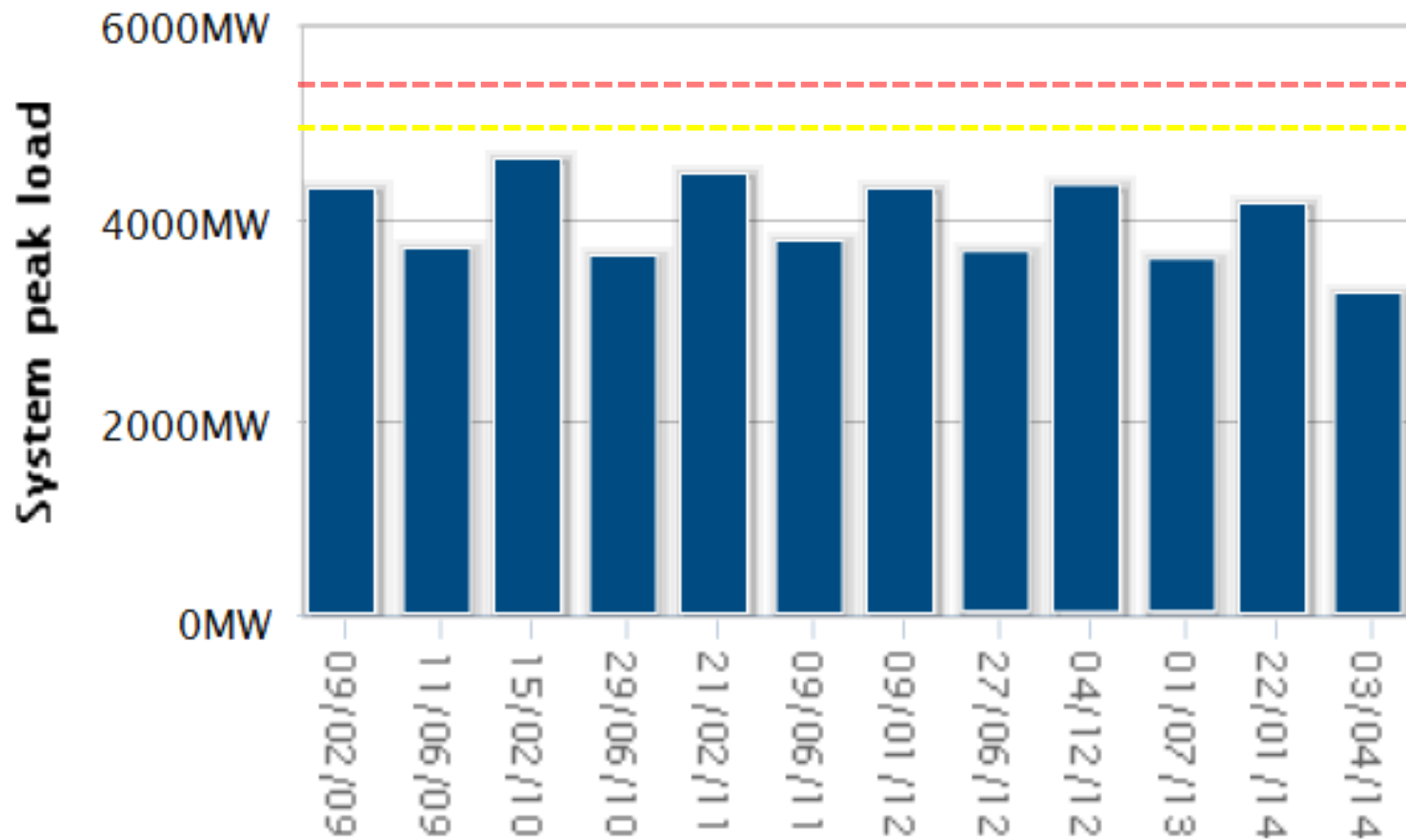


positive energy

Customers, Networks and Solar PV

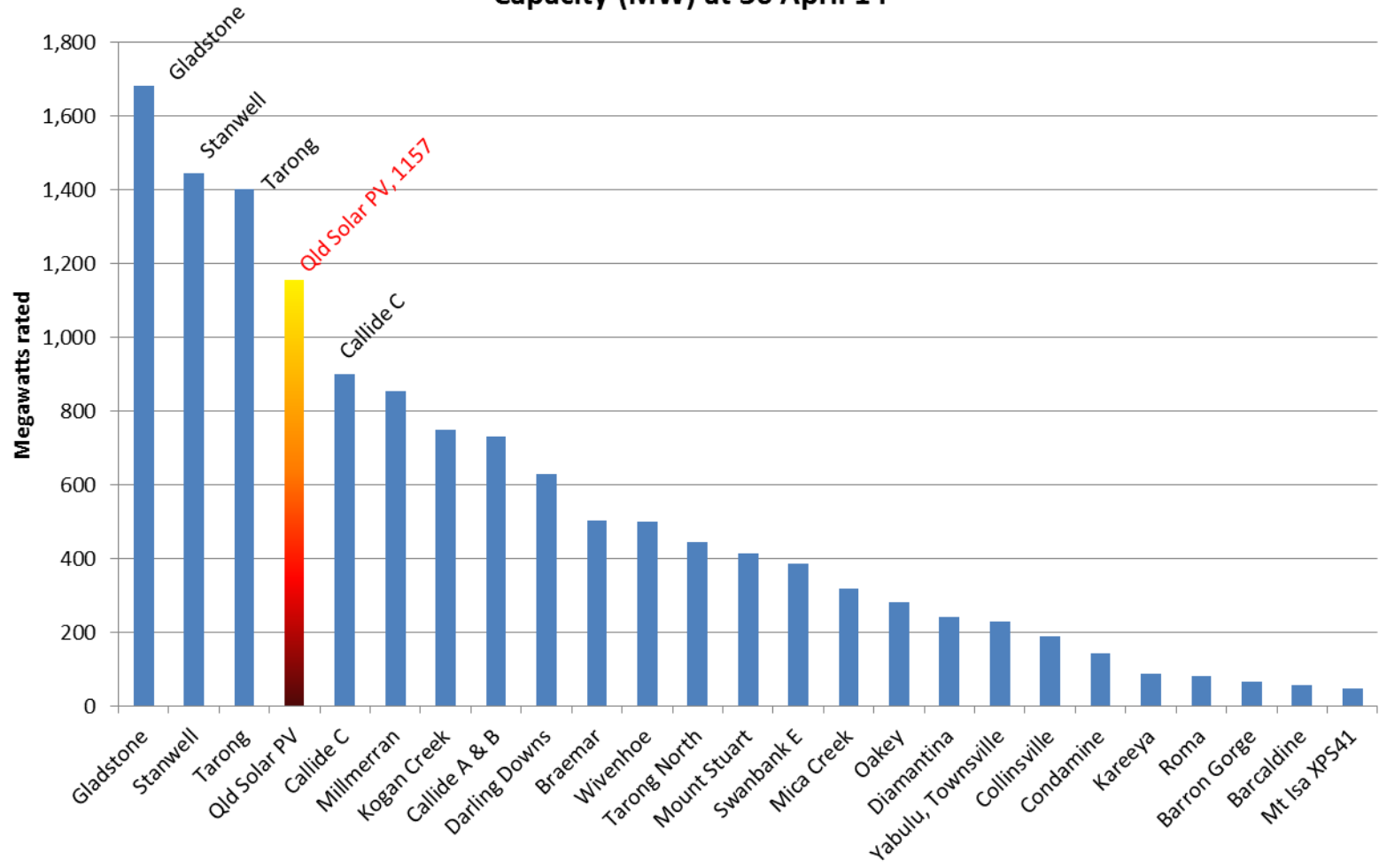
Mike Swanston
May 2014

System peak load days, last five years



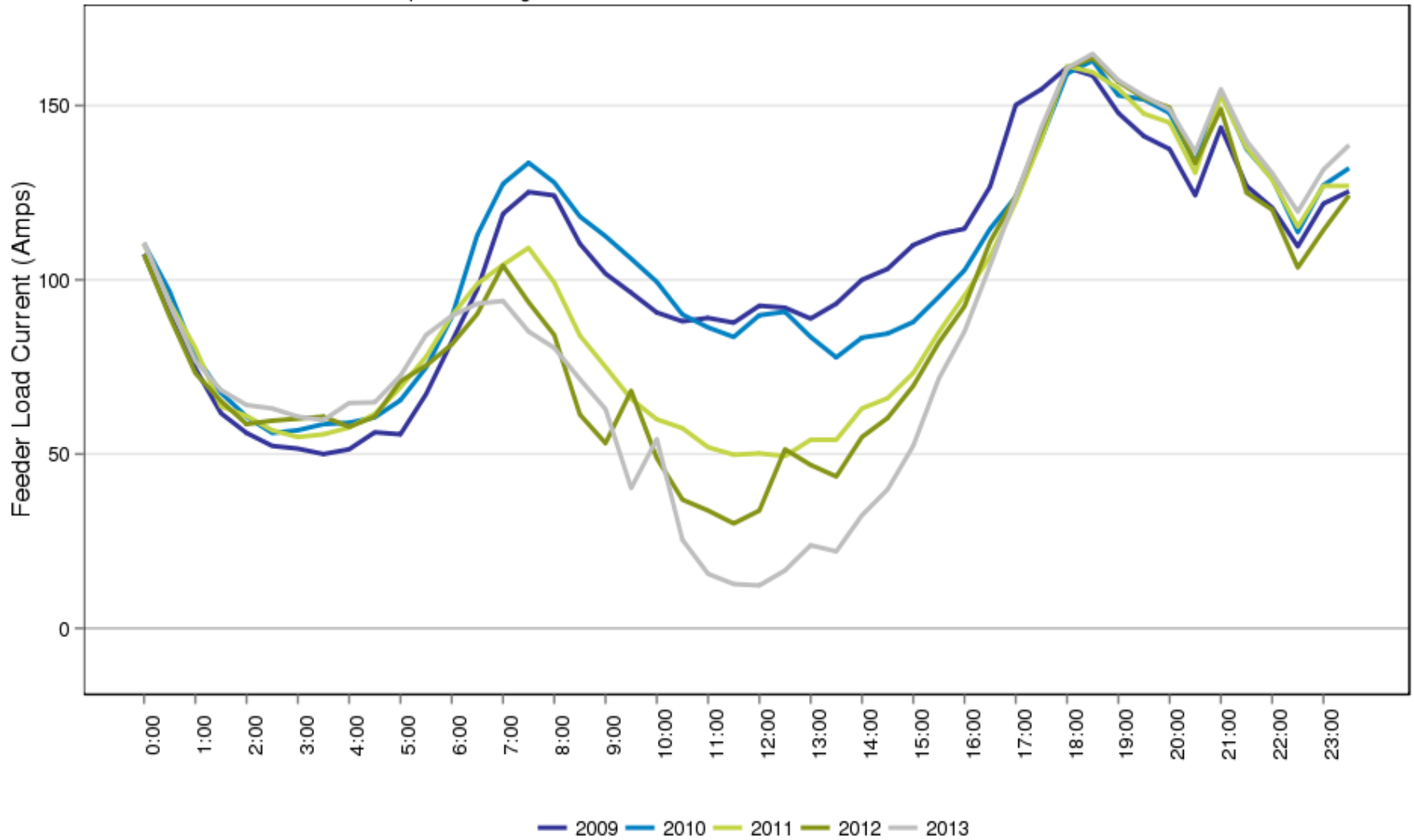
Queensland Generators

Capacity (MW) at 30 April 14

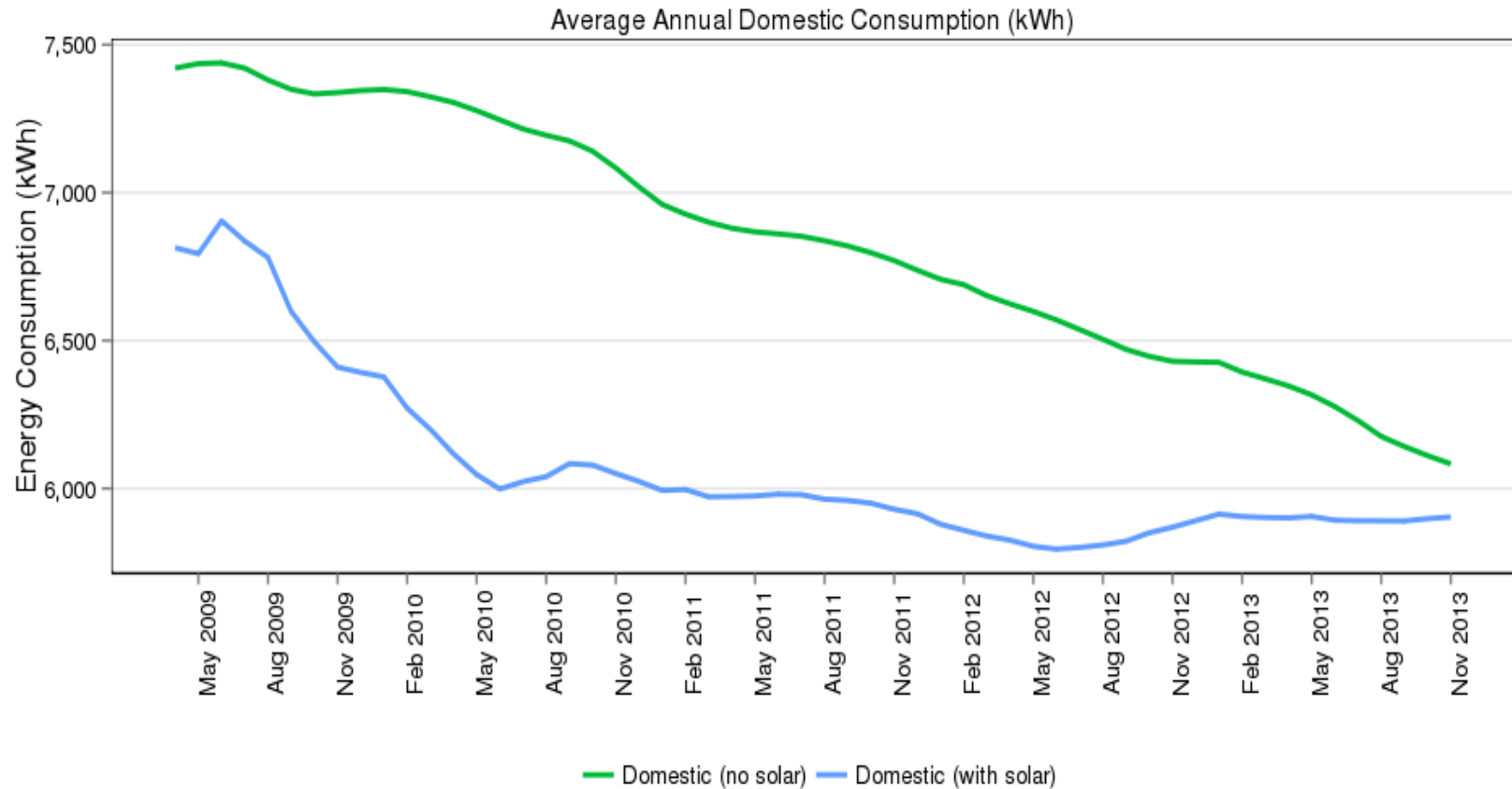


Its called 'The Duck Curve'

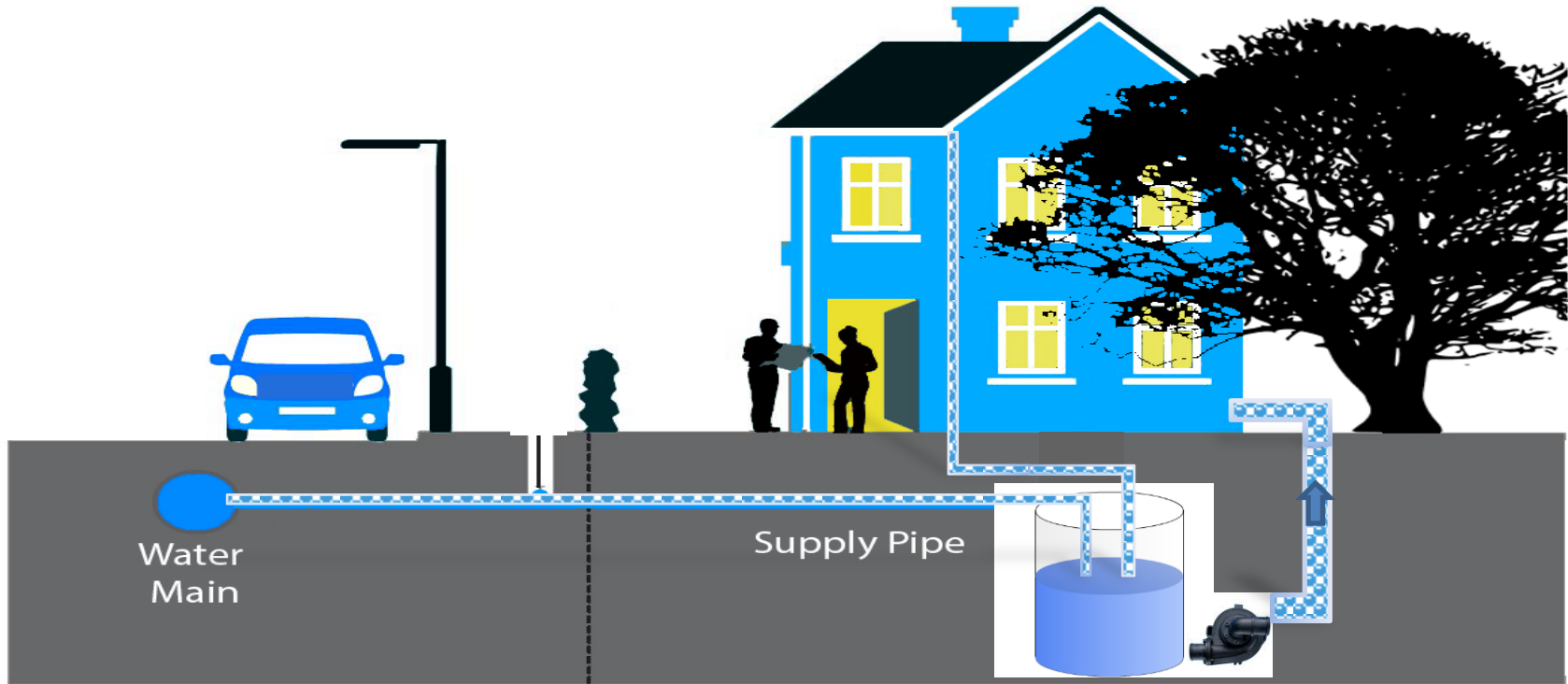
Impacts of High Solar PV Penetration on Residential Feeder - CMD3A



Its not just solar PV customers who are using less energy



Demand Charging - The Thin Pipe Model





positive energy